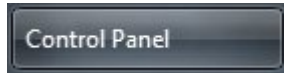


## STEPS IN CREATING PPPOE DIALER IN WINDOWS 7

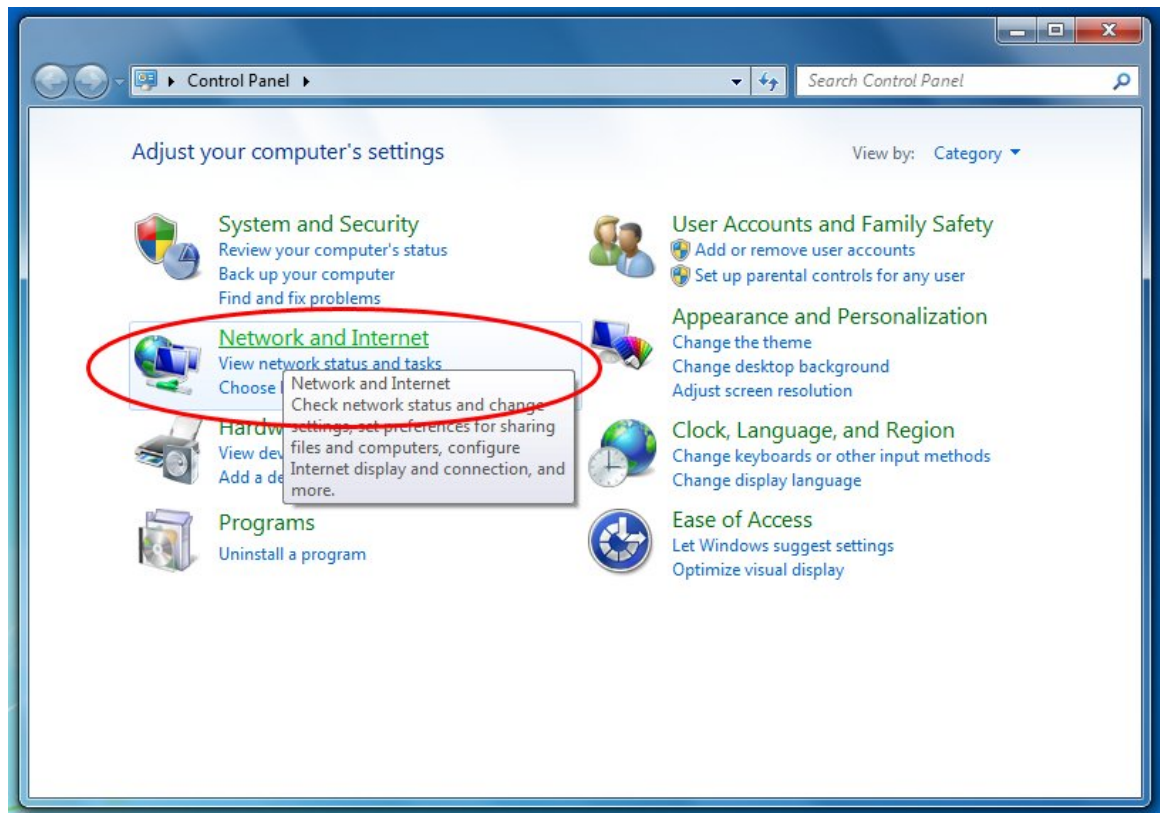
- 1) Click the Windows 7 Orb.



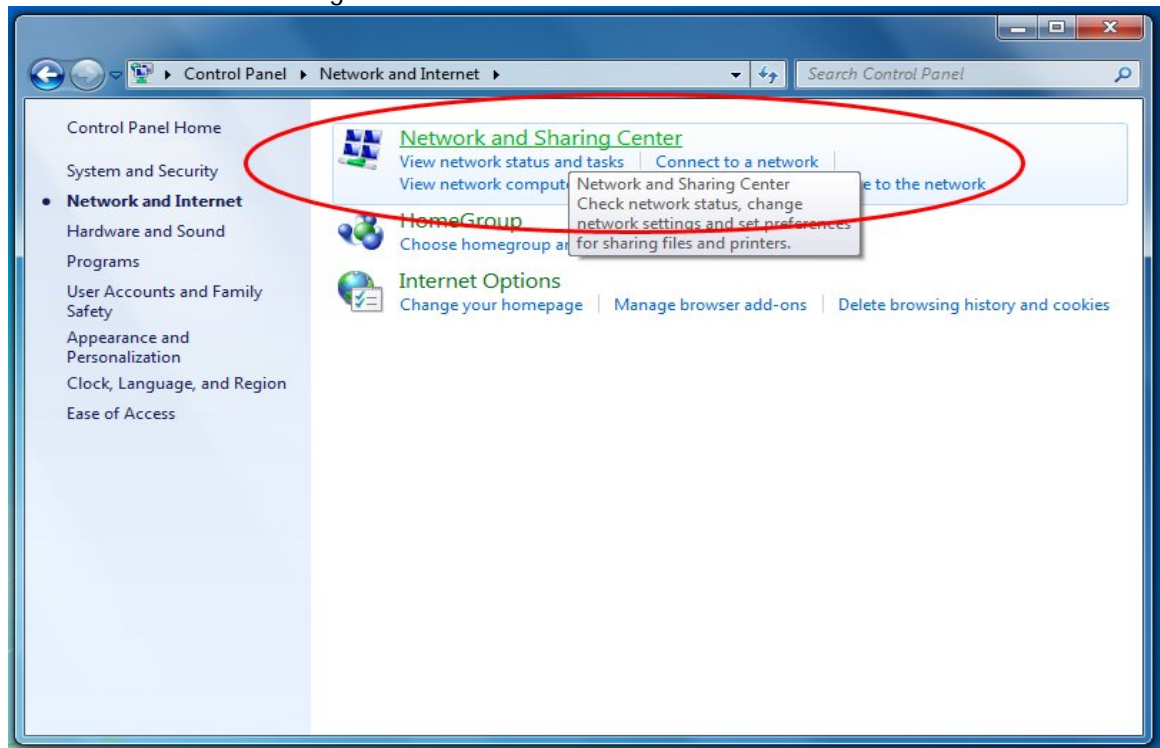
- 2) Click Control Panel.



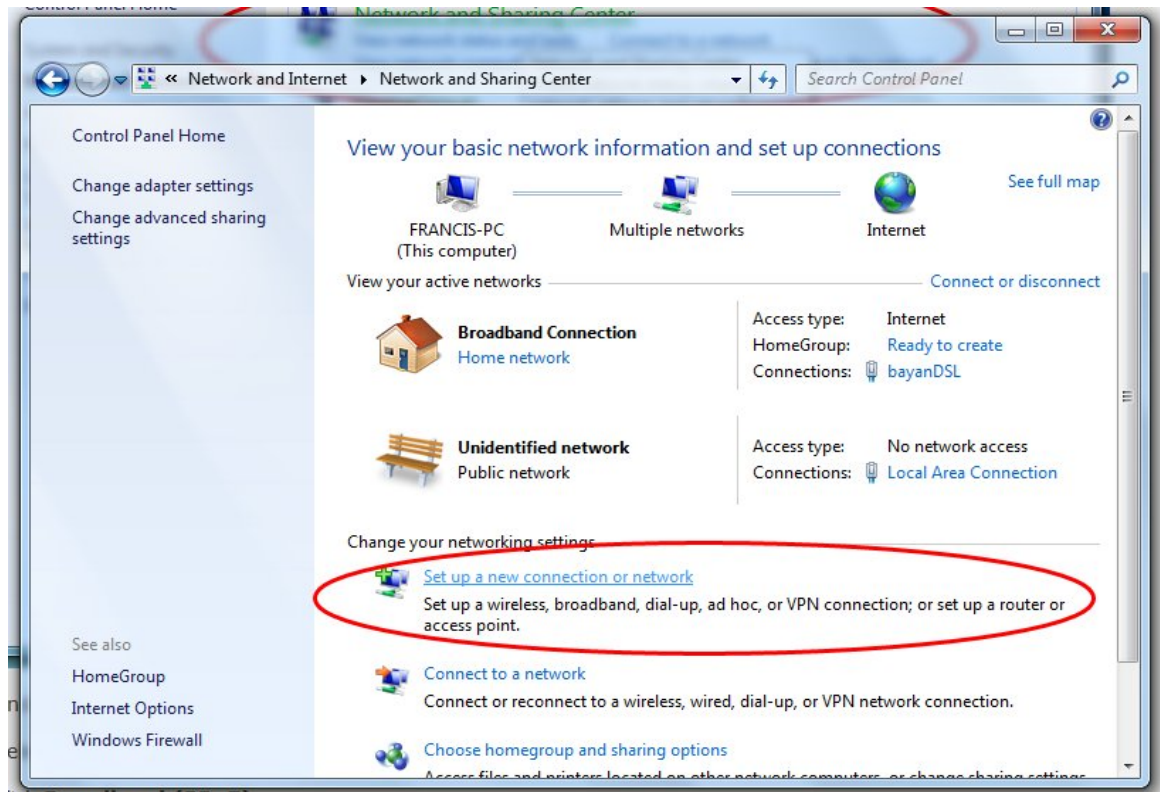
- 3) Click Network and Internet.



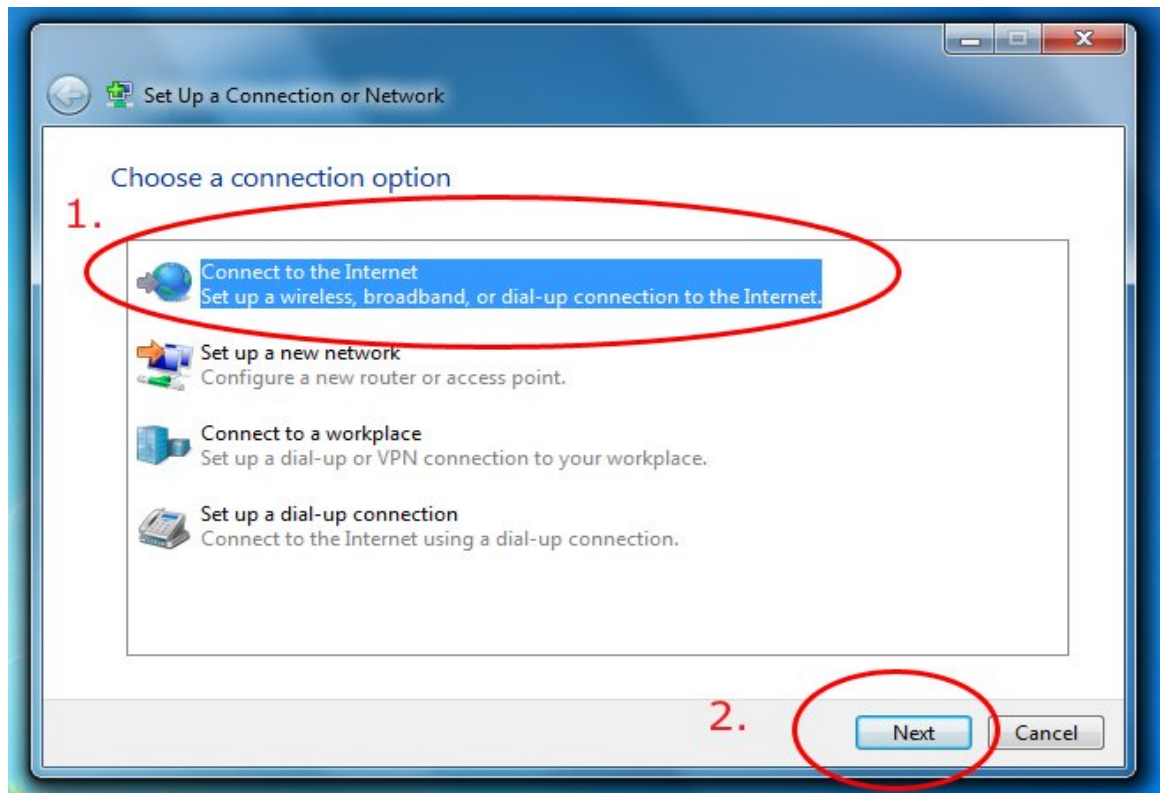
4) Click Network and Sharing Center.



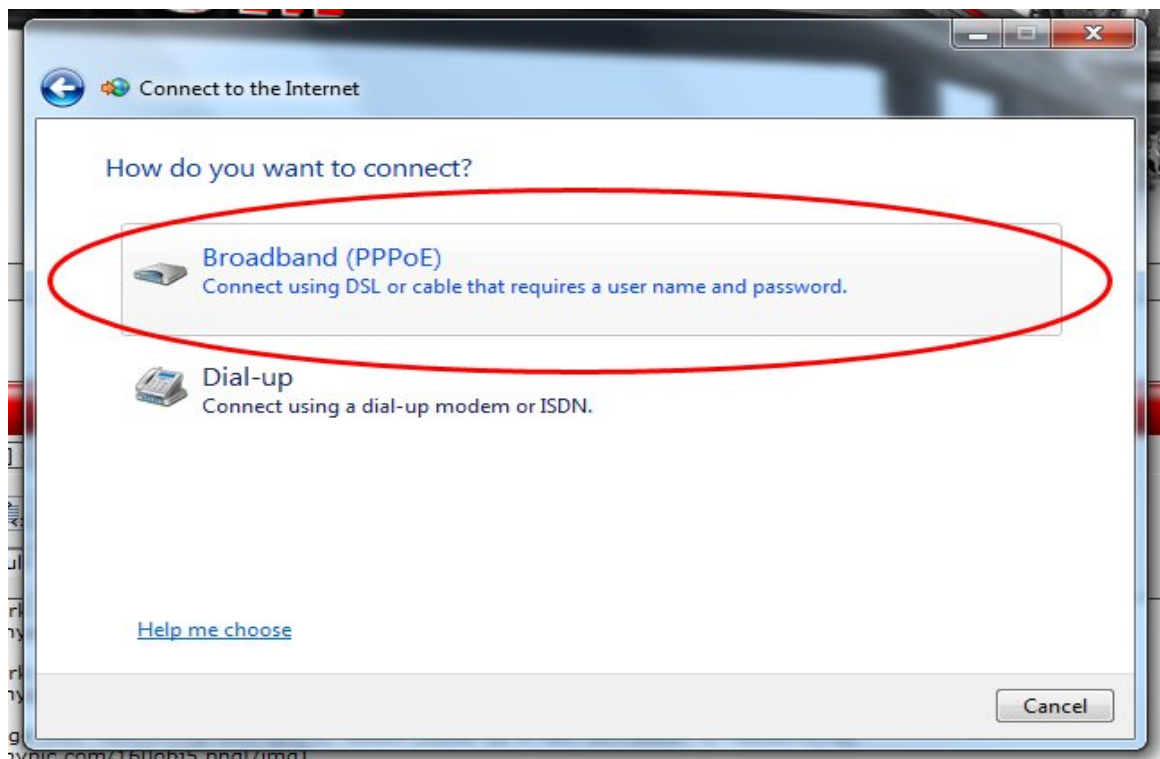
5) Under 'Change your networking settings', select Set up a new connection or network.



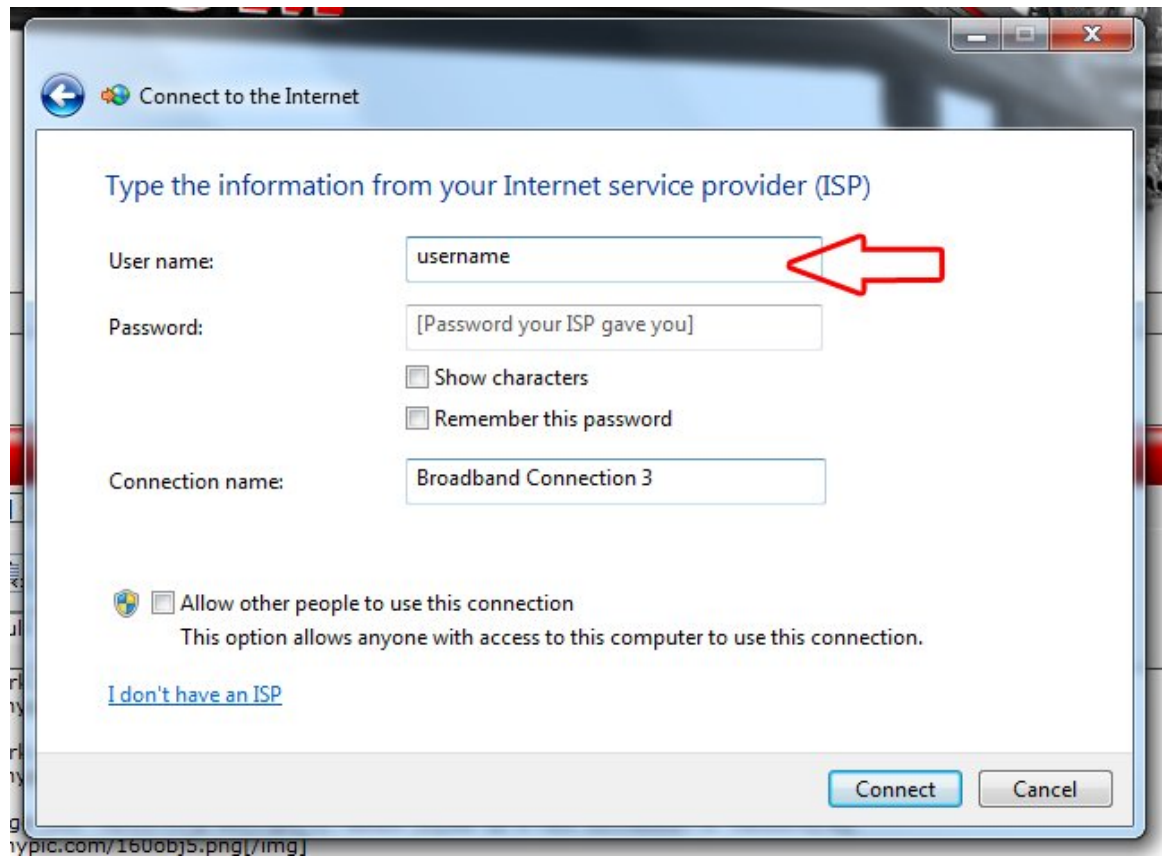
6) Select Connect to the Internet and click Next.



7) Click Broadband (PPoE).



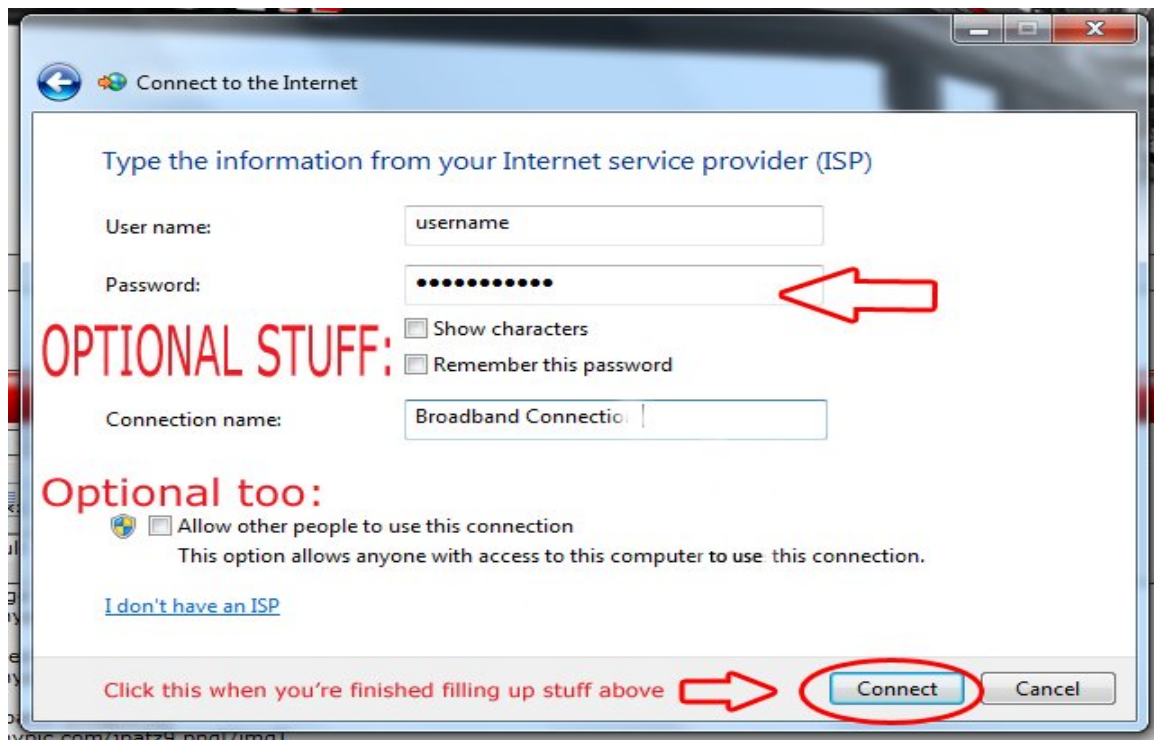
8) Type your username.



9) Type your password (very case sensitive). Tick 'Show Characters' only if you want to look at the password you have typed or you are going to type. Not recommended if you care for your privacy; Tick 'Remember Password' if you don't want to type your password once you connect to the Internet.

In "Internet Account Information", enter the information for your account:

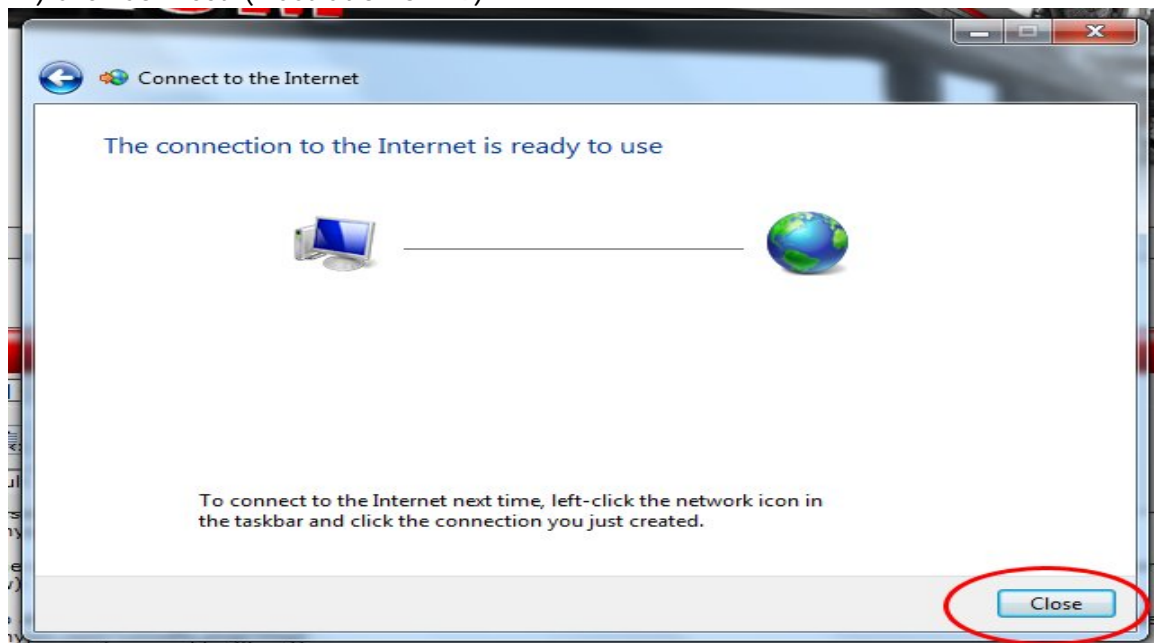
- Username: Enter your username, e.g. [6047366500@pppoe.net](mailto:6047366500@pppoe.net)
- Password: Enter your password e.g. [V6H1E5](#)
- Confirm password: Enter your password again
- Allow other people to use this connection (Optional)



10) Type the name of your internet provider. If not, Windows will name it Broadband Connection and you can rename it anytime. (Illustration above)

11) If you want to allow anyone who has access to the computer to use the internet connection, tick 'Allow other people to use this connection'. (Illustration on #9)

12) Click Connect. (Illustration on #9)



13. Click Close and you're done.